



341C LONDON ROAD MITCHAM, CR4 4BE

£1,200 PER MONTH

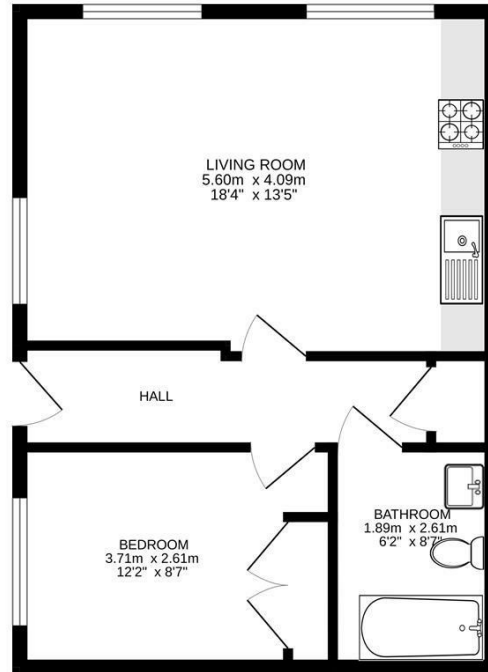
*** AN EXTREMELY WELL PRESENTED ONE DOUBLE BEDROOM UNFURNISHED APARTMENT ***

This spacious ground floor flat was built circa 2015 and forms part of this well regarded development and offering access to local shops and good transport links including Bus services, tram link and Mitcham Junction station.

The property is well presented and features a modern kitchen with lounge area, modern bathroom suite, double glazing, electric heating system and good decorative order throughout. The property does not come with a parking space

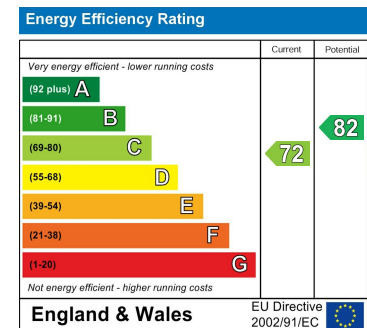
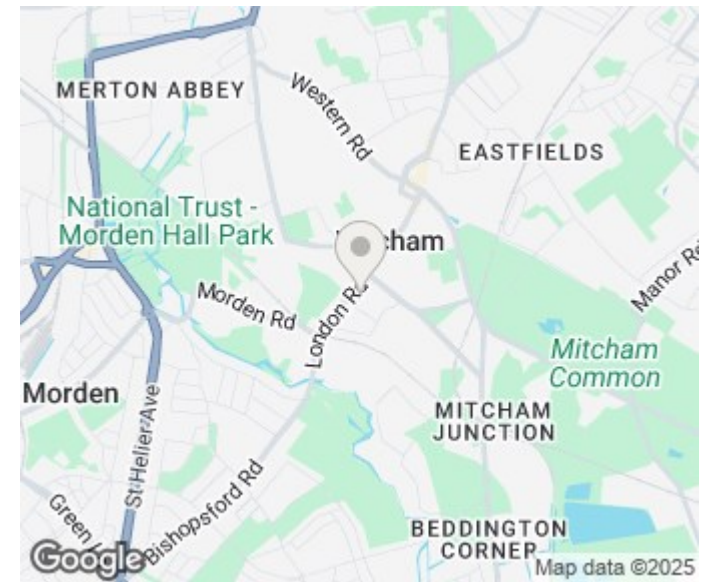


TOOMEY
ESTATE AGENTS



Ground floor
43.6 sq.m. (470 sq.ft.) approx.

TOTAL FLOOR AREA: 43.6 sq.m. (470 sq.ft.) approx.
Measurements are approximate. Not to scale. Illustrative purposes only.
Made with Metropix ©2025



Agents Note: Whilst every care has been taken to prepare these particulars, they are for guidance purposes only. All measurements are approximate and are for general guidance purposes only and whilst every care has been taken to ensure their accuracy, they should not be relied upon and potential buyers/tenants are advised to recheck the measurements

Toomey Estate Agents Sales
333a London Road
Mitcham
Surrey
CR4 4BE

0208 715 9333
enquiries@toomeyestateagents.co.uk
www.toomeyestateagents.co.uk



TOOMEY
ESTATE AGENTS